



# County Officials E-News

*Promoting better county government through direct assistance to county officials and their associations.*

## Updated 2018 IRS Withholding Tables Now Available

The Internal Revenue Service recently released [Notice 1036](#), which updates the income-tax withholding tables for 2018 reflecting changes made by the tax reform legislation enacted last month. This is the first in a series of steps that IRS will take to help improve the accuracy of withholding following major changes made by the new tax law. To view more information about this series on Form W-4, please visit the IRS website at <https://www.irs.gov/forms-pubs/about-form-w4>.

The updated withholding information shows the new rates for employers to use during 2018. Employers should have begun using the 2018 withholding tables by February 15, 2018.

Many employees began to see changes in their paychecks to reflect the new law in February. The time it will take for employees to see the changes in their paychecks will vary depending on how quickly the new tables are implemented by their employers and how often they are paid — generally weekly, biweekly or monthly.

The new withholding tables are designed to work with the Forms W-4 that workers have already filed with their employers to claim withholding allowances. This will minimize burden on taxpayers and employers. Employees do not have to do anything at this time.

The new law makes a number of changes for 2018 that affect individual taxpayers. The new tables reflect the increase in the standard deduction, repeal of personal exemptions, and changes in tax rates and brackets. For people with simpler tax situations, the new tables are designed to produce the correct amount of tax withholding. The revisions are also aimed at avoiding over- and under-withholding of tax as much as possible.

To help people determine their withholding, the IRS has revised the [withholding tax calculator](#) on IRS.gov. Taxpayers are encouraged to use the calculator to adjust their withholding.

The IRS has also [revised the Form W-4](#). Form W-4 and the revised

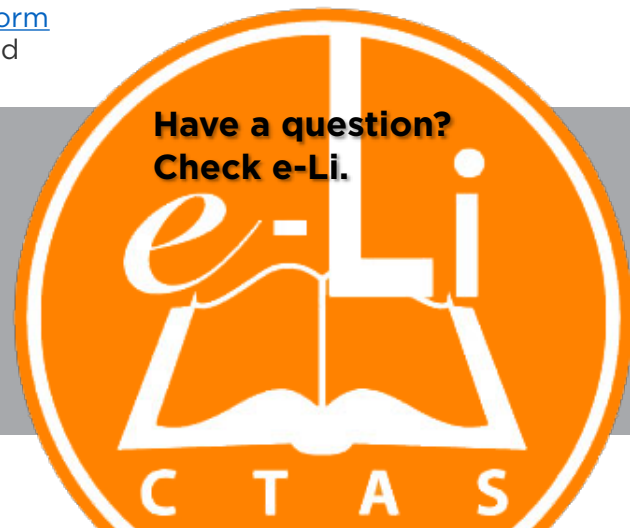
calculator reflect additional changes in the new law, such as changes in available itemized deductions, increases in the child tax credit, the new dependent credit, and repeal of dependent exemptions.

The calculator and new Form W-4 can be used by employees who wish to update their withholding in response to the new law or changes in their personal circumstances in 2018, and by workers starting a new job.

More information is available in the [Withholding Tables Frequently Asked Questions](#).

## In This Issue...

County Spotlight: Meigs County	2
TDEC Announces \$6 Million in Recycling Grants	3
COAT Regional Meetings	3
Upcoming Training	3
COAT Has Moved	3



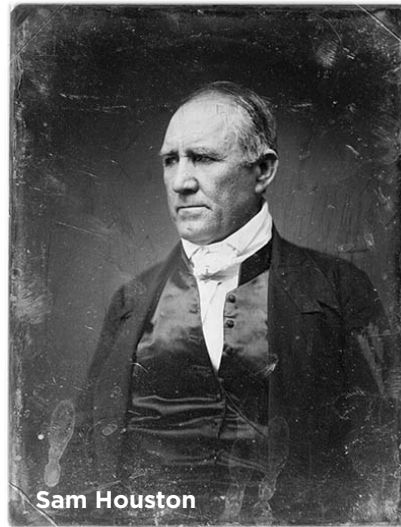
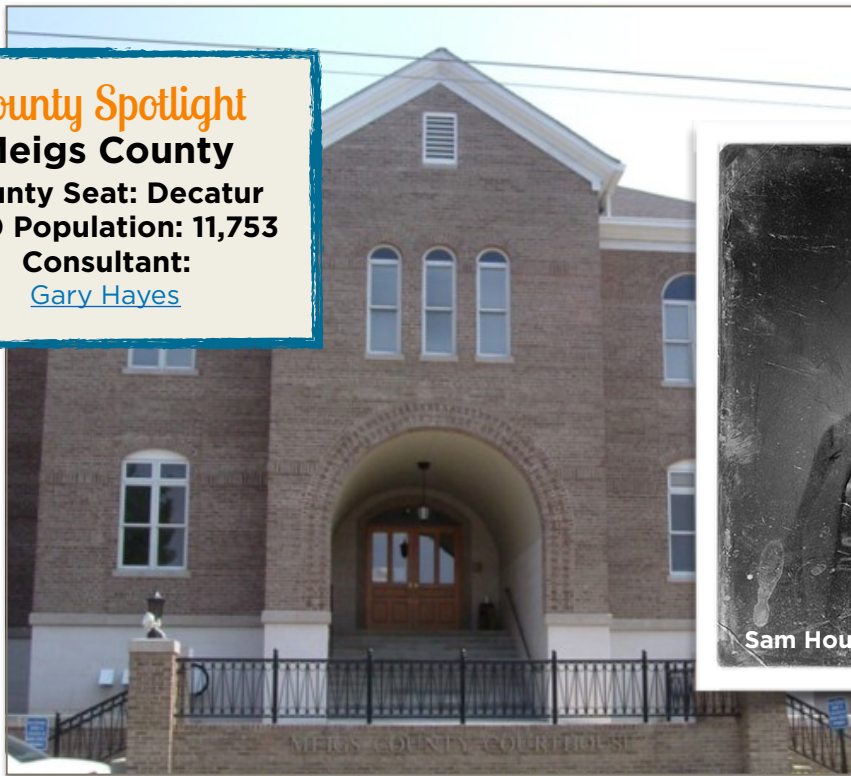
## County Spotlight

### Meigs County

**County Seat: Decatur**  
**2010 Population: 11,753**

**Consultant:**

[Gary Hayes](#)



Sam Houston

Before 1819, the area that is now Meigs County was part of the Cherokee nation. However, white settlers established ferries across the Tennessee River from Rhea County as early as 1807. Colonel Return J. Meigs, who was to become the county's name source, operated a federal Indian agency across the river in Rhea County until 1817, when the agency moved to what is now

Meigs County. In 1819, the Calhoun Treaty opened the land to settlement. Meigs County was formed in 1836 from parts of Rhea County. Meigs County is also home to one of Tennessee's former governors. In 1809 a teenage boy ran away from home to live with Cherokee Indians on Hiwassee Island, located in Meigs County. He stayed there for about three years and was

given the name "The Raven" by a Cherokee chief. The boy later came back to white society and grew up to become an important military officer and politician.

His name was Sam Houston. He eventually became governor of Tennessee and then governor of Texas.

## TDEC Announces Over \$6 Million in Grants to Promote Recycling

The Tennessee Department of Environment and Conservation (TDEC) recently announced \$6,041,629 in grants to support community recycling efforts in a statewide effort to reduce landfill waste.

"TDEC is committed to increasing the diversion and beneficial use of materials that would otherwise end up in landfills or contaminating

our waters," said TDEC Commissioner Bob Martineau. "These grants will help local communities meet the ever-growing challenge of finding ways to reuse materials that would otherwise be discarded, to benefit our economy and protect our environment."

Awarded projects fall into one of five categories: Recycling Hub and Spoke, Recycling



Equipment, Recycling Rebate, Used Oil and Convenience Centers. Specific grant information is detailed on the TDEC website at <https://www.tn.gov/environment/news/2018/2/21/tdec-announces-over--6-million-in-grants-to-promote-recycling.html>.



**COUNTY  
OFFICIALS  
ASSOCIATION OF  
TENNESSEE**

## Regional Meetings

**Middle Tennessee**  
**March 20-21, 2018**  
DoubleTree - Murfreesboro

**East Tennessee**  
**March 22-23, 2018**  
Bridgewater Place - Knoxville



## Heads up! COAT has Moved

Please update your address books  
with COAT's new mailing address:

**County Officials Association of Tennessee**  
**226 Anne Dallas Dudley Blvd\*, Suite 200**  
**Nashville, TN 37219**

*\*Formerly Capitol Blvd.*



## Upcoming Training

All classes are 8:30am-12:30pm local time.



**k@te**

**Register today!**

### **Managing Conflict and Difficult Conversations, Part 2**

*\*You must have taken Part 1 to register for Part 2.*

March 22 Jackson - Jackson Energy Authority  
March 23 Murfreesboro - Embassy Suites

### **Personnel Issues: Leadership for Managers**

April 5 Jackson - Jackson Energy Authority  
April 6 Murfreesboro - Doubletree Hotel  
April 17 Johnson City - Carnegie Hotel  
April 18 Knoxville - UT Conference Center

### **Participant Cancellation Policy**

Please cancel 3 days prior to a class if you cannot attend. Expenses are incurred for our classes based on the number of registrations that we have in each class.

### **Class Cancellation Policy**

Each class requires a minimum of 15 participants for the class to be held. Classes with less than 15 participants enrolled will be canceled.



**County Technical Assistance Service**  
**INSTITUTE FOR PUBLIC SERVICE**

226 Anne Dallas Dudley Blvd, Suite 400 Nashville, Tennessee 37219

[www.ctas.tennessee.edu](http://www.ctas.tennessee.edu) (615) 532-3555